

# Fair Lawn 2010-2011 Public Budget Hearing March 31, 2010



Fair Lawn Board of Education  
Bruce Watson, Superintendent  
Joanne Wilson, Business Admin.  
Judith Moran, Asst. Superintendent  
Lisa Panagia, Director Human Resources  
Joyce Beam, Director of Special Education  
John DiPaola, Asst. Business Administrator

# Superintendent's District Goals



- **Success For Each and Every Student**
- **Quality and Continuous Improvement**



## STATE AID SHORTAGE 2010-2011

	<u>State Aid Fully Funded</u>	<u>State Aid Received</u>	<u>State Aid Shortage</u>
<b>CIEFA Formula 2002-2008</b>	\$35,901,189	\$28,741,931	\$7,159,258
<b>SFRA 2008 Formula</b>			
<b>2008-2009</b>	13,594,418	6,157,126 <b>A</b>	7,437,292
<b>2009-2010</b>	13,418,700	4,677,402 <b>B</b>	8,741,298
<b>2010-2011</b>	13,155,325	1,001,943 <b>C</b>	12,153,382
<b>2002-2011 Cumulative State Aid (Unfunded)</b>			<b>\$35,491,230</b>

**A** State deducted \$368,483 in aid (PERS) and held June payment until July

**B** State deducted \$401,283 in aid and cut Extraordinary Aid 15%

**C** State deducted additional \$93,421 for Debt Service Assessment

# What Happened This Year?



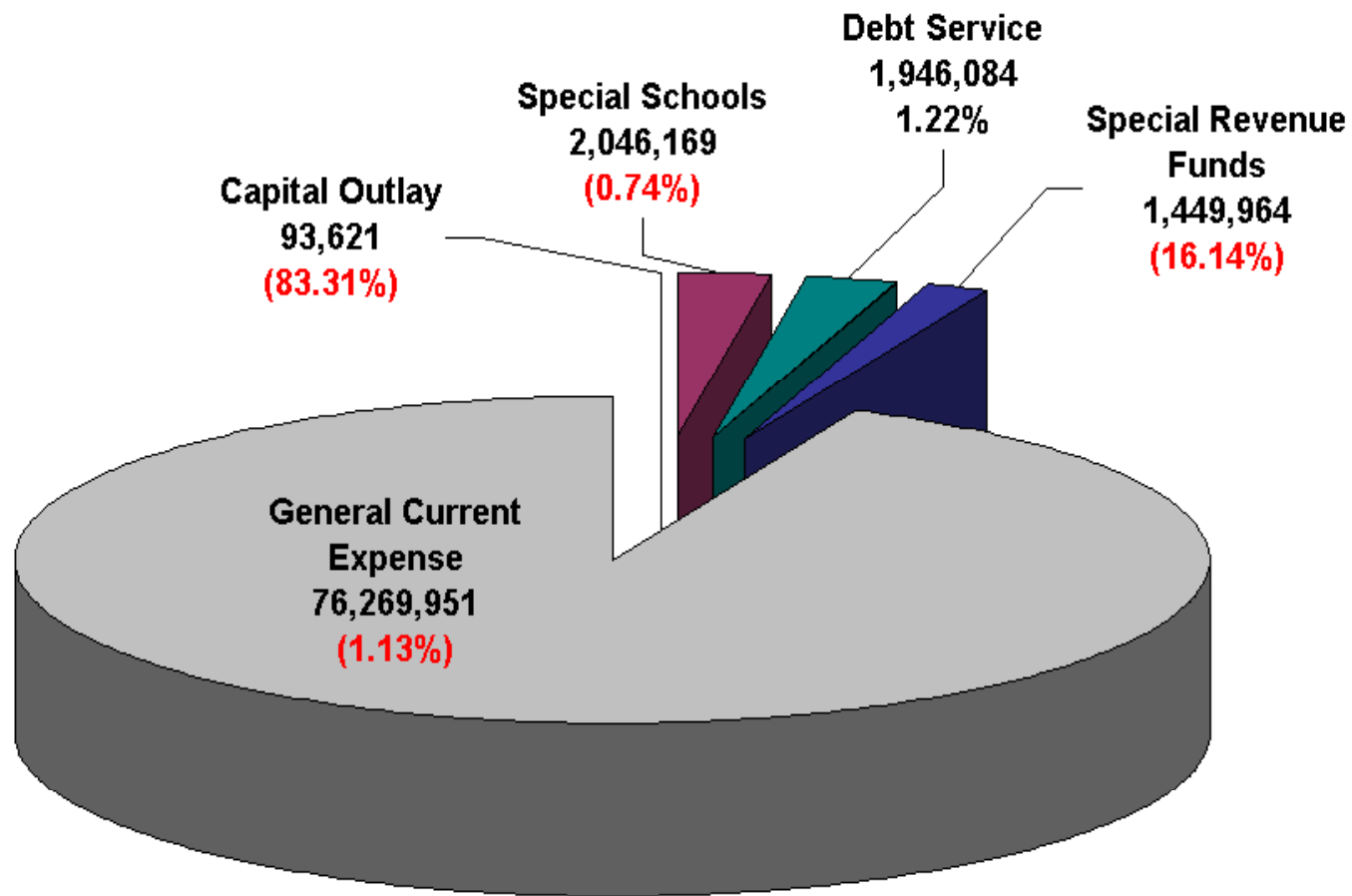
- January 2010—restricted growth--needed to reduce budget draft (\$2,214,511)
- January 2010—abolished positions and stopped spending
- February 2010—reduced (\$401,000) of State Aid—  
appealed and won—actual (\$156,000) loss
- March 2010—(\$3,983,321) reduction of the  
\$5,078,685 from the previous years (FLAT)

**ANALYSIS OF FUND TOTALS  
CURRENT YEAR VS. PROPOSED BUDGET  
TOTAL BUDGET \$81,805,789**

	<b>2009/2010 ORIGINAL BUDGET</b>	<b>2010/2011 PROPOSED BUDGET</b>	<b>INCREASE/ DECREASE</b>	<b>% INCREASE/ DECREASE</b>
<b>Total General Current Expense</b>	\$77,139,948	\$76,269,951	(\$869,997)	-1.13%
<b>Capital Outlay</b>	560,849	93,621	(467,228)	-83.31%
<b>Special Schools</b>	2,061,347	2,046,169	(15,178)	-0.74%
<b>General Fund Grand Total</b>	<b>\$79,762,144</b>	<b>\$78,409,741</b>	<b>(\$1,352,403)</b>	<b>-1.70%</b>
<b>*Total Special Revenue Funds</b>	<b>\$1,729,127</b>	<b>\$1,449,964</b>	<b>(\$279,163)</b>	<b>-16.14%</b>
<b>Total Debt Service Funds</b>	<b>\$1,922,563</b>	<b>\$1,946,084</b>	<b>\$23,521</b>	<b>1.22%</b>
<b>Total Expenditures / Appropriation</b>	<b>\$83,413,834</b>	<b>\$81,805,789</b>	<b>(\$1,608,045)</b>	<b>-1.93%</b>

\*Special Revenue Funds reflect state and federal restrictive spending aided programs.  
This area is not supported by any local taxes.

**2010-2011**  
**BUDGET ANALYSIS OF FUND TOTALS**  
**TOTAL \$81,805,789**  
with percent of increase/decrease from 2009-2010



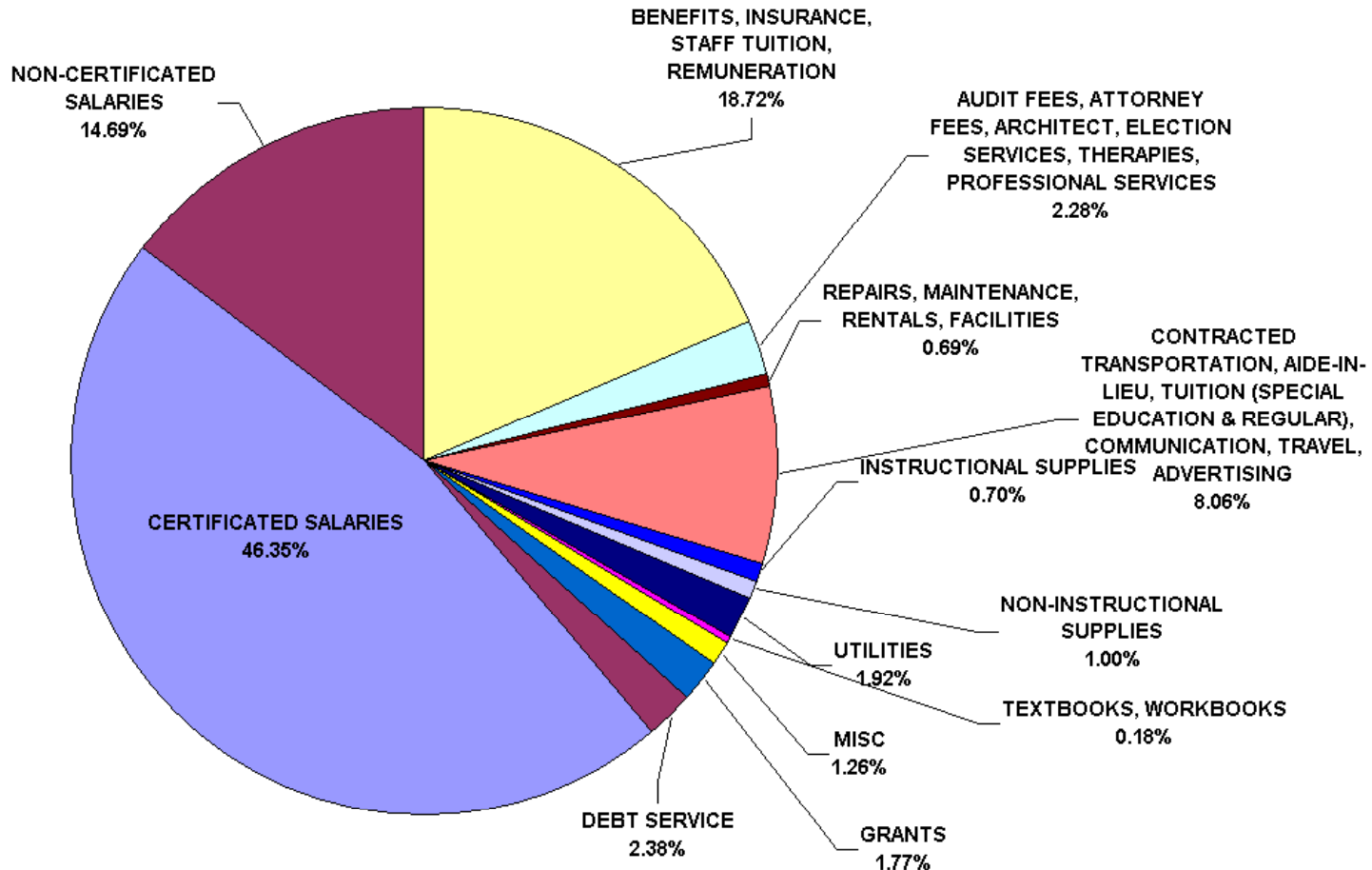
## GENERAL FUND BUDGET INCREASES

<u>Budget</u>	<u>Amount</u>	<u>Inc / Dec</u>	<u>Percent</u> <u>Inc / Dec</u>	
2002-03	\$56,496,620	\$2,289,738	4.22%	Defeated Budget
2003-04	\$59,891,869	\$3,395,249	6.01%	
2004-05	\$63,027,989	\$3,136,120	5.24%	
2005-06	\$65,197,692	\$2,168,703	3.44%	Defeated Budget
2006-07	\$68,999,111	\$3,801,419	5.83%	
2007-08	\$72,537,466	\$3,538,355	5.13%	
2008-09	\$76,285,310	\$4,041,744	5.17%	
2009-10	\$79,762,144	\$3,476,834	4.56%	
<b>2010-11</b>	<b>\$78,409,741</b>	<b>(\$1,352,403)</b>	<b>-1.70%</b>	

## EXPENDITURE SUMMARY 2010-11

	<u>Budget 09-10</u>	<u>Budget 10-11</u>	<u>% Inc/Dec</u>
<b><u>Regular Program</u></b>			
Regular Instruction	23,858,994	23,302,751	-2.33%
Attendance, Health, Media, Guidance, Co Curricular, Athletics	4,528,363	3,700,762	-18.28%
Tuition - Regular Students - Voc. Tech, Academies, Charter School	418,291	474,687	13.48%
<b>Regular Program Total</b>	<b>28,805,648</b>	<b>27,478,200</b>	<b>-4.61%</b>
<b><u>Supplementary and Special Education Program</u></b>			
Bilingual, Basic Skills, Speech, Supplemental Instruction	3,784,984	3,682,266	-2.71%
Special Education	14,140,462	14,628,522	3.45%
	<b>17,925,446</b>	<b>18,310,788</b>	<b>2.15%</b>
<b><u>School Admin, Curriculum, Benefits and Training</u></b>			
Staff Training and Improvement	558,867	518,996	-7.13%
Benefits - Educational Staffing	9,642,356	10,559,991	9.52%
Educational Administration	3,621,555	3,307,596	-8.67%
<b>School Admin, Curriculum, Benefits and Training Total</b>	<b>13,822,778</b>	<b>14,386,583</b>	<b>4.08%</b>
<b>Total Instructional Appropriations</b>	<b>60,553,872</b>	<b>60,175,571</b>	<b>-0.62%</b>
<b><u>General Administration &amp; Support Staff</u></b>			
Transportation	2,293,993	2,263,716	-1.32%
Maintenance Services, Supplies, Contracts	1,072,742	1,008,048	-6.03%
Custodial Serv., Utilities, Property Insurance, Security & Supplies	5,929,193	5,560,463	-6.22%
General Administration -Office, Elections, Legal, Auditor	995,378	943,345	-5.23%
Business Admin./Office, Bd. Secy, Prof Serv. (Architect, Bids,etc.)	1,229,280	1,114,226	-9.36%
Benefits - Support Staff	4,132,438	4,525,711	9.52%
Administration Information Technology	933,052	678,871	-27.24%
<b>General Administration &amp; Support Staff Total</b>	<b>16,586,076</b>	<b>16,094,380</b>	<b>-2.96%</b>
<b>Total Current Expense Budget</b>	<b>77,139,948</b>	<b>76,269,951</b>	<b>-1.13%</b>
<b><u>Capital, Special Schools, Revenues &amp; Debt Service</u></b>			
Capital Outlay (Building Improvements & Mandated State Payment)	560,849	93,621	-83.31%
Special Schools (Community School and Summer Schools)	2,061,347	2,046,169	-0.74%
Special Revenues (State and Federal Grants)	1,729,127	1,449,964	-16.14%
Debt Service	1,922,563	1,946,084	1.22%
<b>Capital, Special Schools, Revenues &amp; Debt Service Total</b>	<b>6,273,886</b>	<b>5,535,838</b>	<b>-11.76%</b>
<b>Total School Budget</b>	<b>83,413,834</b>	<b>81,805,789</b>	<b>-1.93%</b>

## 2010/2011 PROJECTED EXPENSES BUDGET TOTAL \$81,805,789



**C** State deducted additional \$93,421 for Debt Service Assessment

## REVENUE SUMMARY % OF BUDGET

<u>Budget Category</u>	<u>2009-10</u>	<u>% Budget</u>	<u>2010-11</u>	<u>% Budget</u>
<b>Budgeted Fund Balance</b>	\$ 779,730	<b>0.9%</b>	1,200,000	<b>1.5%</b>
<b>Grants &amp; Entitlements</b>	\$ 1,729,127	<b>2.1%</b>	1,449,964	<b>1.8%</b>
<b>State Aid &amp; SEMI</b>	\$ 6,790,324	<b>8.1%</b>	2,823,818	<b>3.5%</b>
<b>Tuition</b>	\$ 542,980	<b>0.7%</b>	525,340	<b>0.6%</b>
<b>Community School</b>	\$ 1,663,626	<b>2.0%</b>	1,586,502	<b>1.9%</b>
<b>Miscellaneous</b>	\$ 489,678	<b>0.6%</b>	373,878	<b>0.5%</b>
<b>Local Taxes</b>	\$ 68,935,957	<b>82.6%</b>	71,900,203	<b>87.9%</b>
<b>Debt Repayment</b>	\$ 1,922,563	<b>2.3%</b>	1,946,084	<b>2.4%</b>
<b>Capital Projects</b>	\$ 559,849	<b>0.7%</b>	0	<b>0.0%</b>
<b>Total Budget</b>	<b>\$ 83,413,834</b>	<b>100.0%</b>	<b>81,805,789</b>	<b>100.0%</b>

## REVENUE

Budgeted Fund Balance	\$ 1,200,000
Local Tax Levy	\$ 71,900,203
State Aid Categorical	\$ 1,095,364
State Aid Extraordinary	\$ 1,691,772
Tuition	\$ 524,540
SEMI	\$ 36,682
Community School	\$ 1,586,502
Miscellaneous	\$ 374,678
<b>Total General Fund Budget</b>	<b>\$ 78,409,741</b>
Grants & Entitlements	\$ 1,449,964
Debt Repayment	\$ 1,946,084
<b>Total Budget</b>	<b>\$ 81,805,789</b>

## EXPENDITURES

### Instructional Expenditures

Regular Education Program	\$ 27,478,200
Special Education Program	\$ 18,770,455
Staff Training	\$ 518,996
School Administration	\$ 3,307,596
Benefits - Educational Staffing	\$ 10,559,991
<b>Total Instructional Expenditures</b>	<b>\$ 60,635,238</b>

### Support Expenditures

Central Service & Technology	\$ 1,793,097
General Administration	\$ 943,345
Maintenance	\$ 6,568,511
Transportation-Special Ed	\$ 1,224,914
Transportation-Other	\$ 1,038,802
Benefits - Support Personnel	\$ 4,525,711
Capital (State Aid Reduction)	\$ 93,621
<b>Total Support Expenditures</b>	<b>\$ 16,188,001</b>

Community School	\$ 1,586,502
<b>Total General Fund Budget</b>	<b>\$ 78,409,741</b>

Grants & Entitlements	\$ 1,449,964
Debt Repayment	\$ 1,946,084
<b>Total School Budget</b>	<b>\$ 81,805,789</b>

---

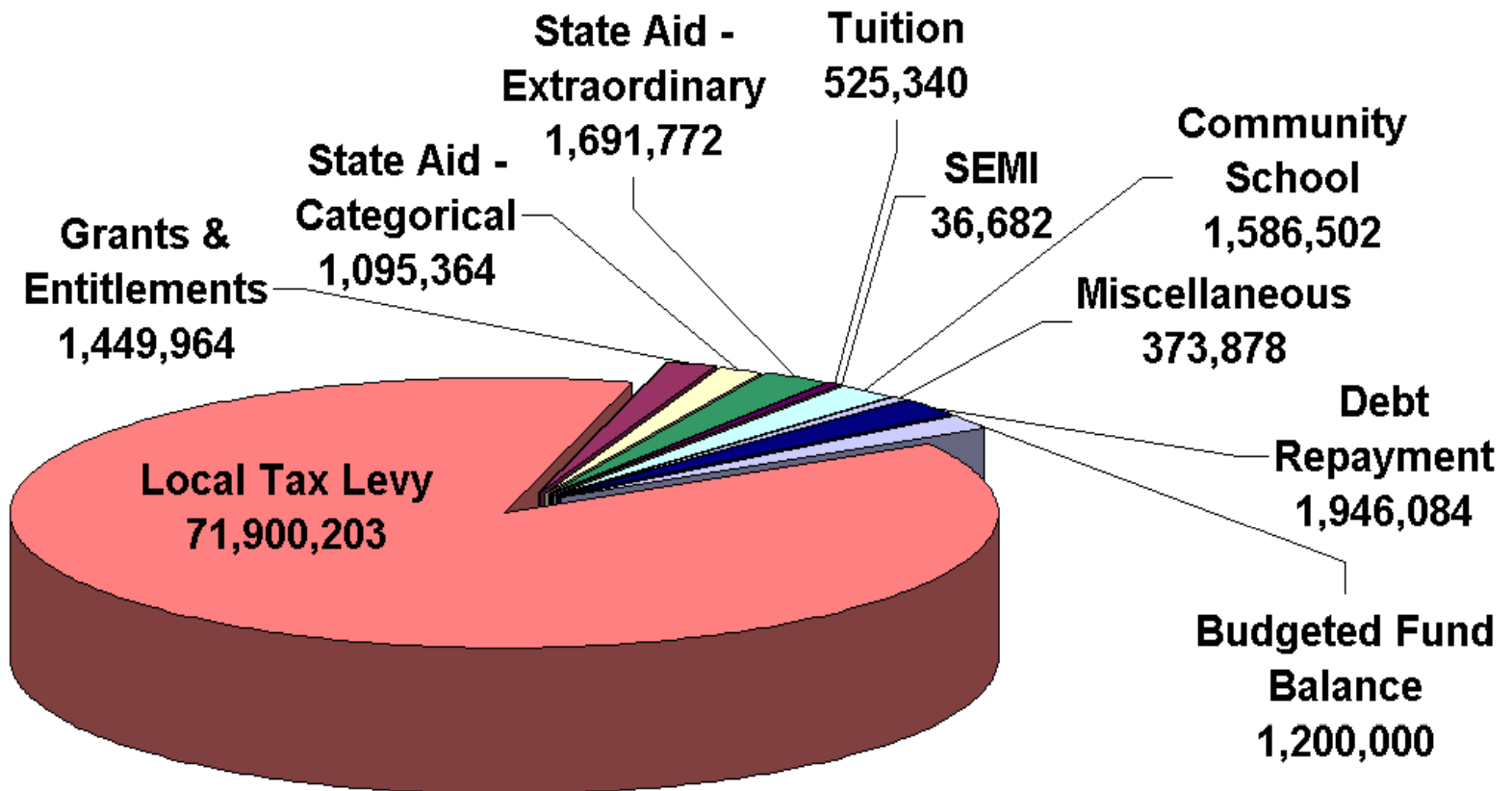
## APPROPRIATED FUND BALANCE

<u>Budget</u>	<u>Amount</u>
2003-04	\$300,000
2004-05	\$310,026
2005-06	\$400,000
2006-07	\$0
2007-08	\$98,868
2008-09	\$692,458
2009-10	\$779,730
<b>2010-11</b>	<b>\$1,200,000</b>

---

## 2010/2011 BUDGET REVENUES

Total \$81,805,789



**EXPENDITURE SUMMARY % OF BUDGET**

	<b>Budget 09-10</b>	<b>% Budget</b>	<b>Budget 10-11</b>	<b>% Budget</b>
<b><u>Regular Program</u></b>				
Regular Instruction	23,858,994	28.6%	23,302,751	28.5%
Attendance, Health, Media, Guidance, Co Curricular, Athletics	4,528,363	5.4%	3,700,762	4.5%
Tuition - Regular Students - Voc. Tech, Academies, Charter School	418,291	0.5%	474,687	0.6%
<b>Regular Program Total</b>	<b>28,805,648</b>	<b>34.5%</b>	<b>27,478,200</b>	<b>33.6%</b>
<b><u>Supplementary and Special Education Program</u></b>				
Bilingual, Basic Skills, Speech, Supplemental Instruction	3,784,984	4.5%	3,682,266	4.5%
Special Education	14,140,462	17.0%	14,628,522	17.9%
<b>Supplementary and Special Education Program Total</b>	<b>17,925,446</b>	<b>21.5%</b>	<b>18,310,788</b>	<b>22.4%</b>
<b><u>School Admin, Curriculum, Benefits and Training</u></b>				
Staff Training and Improvement	558,867	0.7%	518,996	0.6%
Benefits - Educational Staffing	9,642,356	11.6%	10,559,991	12.9%
Educational Administration	3,621,555	4.3%	3,307,596	4.0%
<b>School Admin, Curriculum, Benefits and Training Total</b>	<b>13,822,778</b>	<b>16.6%</b>	<b>14,386,583</b>	<b>17.6%</b>
<b>Total Instructional Appropriations</b>	<b>60,553,872</b>	<b>72.6%</b>	<b>60,175,571</b>	<b>73.6%</b>
<b><u>General Administration &amp; Support Staff</u></b>				
Transportation	2,293,993	2.8%	2,263,716	2.8%
Maintenance Services, Supplies, Contracts	1,072,742	1.3%	1,008,048	1.2%
Custodial Serv., Utilities, Property Insurance, Security & Supplies	5,929,193	7.1%	5,560,463	6.8%
General Administration -Office, Elections, Legal, Auditor	995,378	1.2%	943,345	1.2%
Business Admin./Office, Bd. Secy, Prof Serv. (Architect, Bids, etc.)	1,229,280	1.5%	1,114,226	1.4%
Benefits - Support Staff	4,132,438	5.0%	4,525,711	5.5%
Administration Information Technology	933,052	1.1%	678,871	0.8%
<b>General Administration &amp; Support Staff Total</b>	<b>16,586,076</b>	<b>19.9%</b>	<b>16,094,380</b>	<b>19.7%</b>
<b>Total Current Expense Budget</b>	<b>77,139,948</b>	<b>92.5%</b>	<b>76,269,951</b>	<b>93.2%</b>
<b><u>Capital, Special Schools, Revenues &amp; Debt Service</u></b>				
Capital Outlay (Building Improvements & Mandated State Payment)	560,849	0.7%	93,621	0.1%
Special Schools (Community School and Summer Schools)	2,061,347	2.5%	2,046,169	2.5%
Special Revenues (State and Federal Grants)	1,729,127	2.1%	1,449,964	1.8%
Debt Service	1,922,563	2.3%	1,946,084	2.4%
<b>Capital, Special Schools, Revenues &amp; Debt Service Total</b>	<b>6,273,886</b>	<b>7.5%</b>	<b>5,535,838</b>	<b>6.8%</b>
<b>Total School Budget</b>	<b>83,413,834</b>	<b>100.0%</b>	<b>81,805,789</b>	<b>100.0%</b>

## DOE Comparison Data Fall 2009

### Fall 2009 Certified Staff

### October 15, 2009 ASSA

	Student/ Teacher Ratio		Student/ Admin Ratio		% Students Classified
Lyndhurst	14.4	Ramapo	100.8	Ridgefield	23.10%
Lodi	14.2	Pascack Valley	107.7	<b>Fair Lawn</b>	<b>16.70%</b>
Ridgewood	14.1	Park Ridge	117.5	Teaneck	15.40%
New Milford	13.7	Westwood	118.5	Park Ridge	14.80%
Dumont	13.4	Ridgefield	121.0	Pascack Valley	14.80%
Hasbrouck Heights	13.4	Tenafly	122.8	Cliffside Park	13.80%
Cliffside Park	13.1	Ridgefield Park	123.9	Paramus	13.60%
Fort Lee	13.1	River Dell	124.1	Ramapo	13.50%
River Dell	13.1	East Rutherford	127.3	Bergenfield	13.20%
Paramus	12.9	Hackensack	128.2	Westwood	13.00%
Pascack Valley	12.9	Leonia	129.6	River Dell	12.80%
Bergenfield	12.8	Lyndhurst	143.8	Leonia	12.70%
Hackensack	12.8	Hasbrouck Heights	156.4	Ridgefield Park	12.60%
<b>Fair Lawn</b>	<b>12.6</b>	Fort Lee	160.2	New Milford	12.50%
Ridgefield Park	12.4	Bergenfield	163.8	Lyndhurst	12.20%
Westwood	12.4	New Milford	171.1	Tenafly	12.10%
Glen Rock	12.0	Teaneck	172.3	Glen Rock	11.30%
Park Ridge	11.8	Dumont	175.1	Hackensack	11.10%
Teaneck	11.6	Paramus	175.6	East Rutherford	11.90%
Tenafly	11.4	Glen Rock	177.3	Ridgewood	11.70%
Ramapo	11.2	Lodi	184.4	Hasbrouck Heights	10.70%
Leonia	11.0	<b>Fair Lawn</b>	<b>189.7</b>	Dumont	8.70%
Ridgefield	11.0	Ridgewood	207.2	Fort Lee	8.50%
East Rutherford	10.8	Cliffside Park	209.6	Lodi	8.50%

Source: NJDOE Comparative Spending Guide

### Budget Comparison 2010-2011 Tax Levy & Per Pupil Costs

<u>District</u>	<u>%Incr</u>
Lodi	13.18%
Dumont	11.91%
River Dell	9.26%
Westwood	8.91%
Glen Rock	8.68%
Ridgefield	8.28%
Teaneck	8.16%
Lyndhurst	7.92%
Park Ridge	7.78%
Hasbrouck Heights	7.51%
East Rutherford	7.44%
Pascack Valley	6.17%
Cliffside Park	6.00%
New Milford	5.76%
Fort Lee	4.90%
Ramapo	4.64%
<b>Fair Lawn</b>	<b>4.30%</b>
Hackensack	4.04%
Tenafly	4.00%
Ridgewood	4.00%
Paramus	4.00%
Leonia	4.00%
Bergenfield	3.94%
Ridgefield Park	3.76%

<u>District</u>	<u>Per Pupil</u>
Teaneck	18,201
Pascack Valley	17,294
East Rutherford	16,696
Ramapo	16,643
Ridgefield	16,188
Park Ridge	15,789
Glen Rock	15,074
Hackensack	14,931
Paramus	14,812
Westwood	14,703
<b>Fair Lawn</b>	<b>14,481</b>
River Dell	14,185
Tenafly	14,179
Bergenfield	13,973
Ridgewood	13,149
Leonia	13,080
Ridgefield Park	13,014
Fort Lee	12,803
Cliffside Park	12,691
Dumont	12,516
Hasbrouck Heights	12,362
New Milford	11,794
Lyndhurst	11,719
Lodi	11,679

Source: Advertised Budgets Bergen Record

---

# Percent Change in Median Home Sale Price, From 2008 to 2009

## ■ 0 to -5%

- Englewood Cliffs
- Fair Lawn
- Harrington Park
- Haworth
- Hillsdale
- Lyndhurst
- New Milford
- Saddle Brook
- Tenafly
- Woodcliff Lake
- Wyckoff

□ Record-Sources: NJ  
Treasury Depart.

□ Bergen County Board of  
Taxation

---

# Tax Projection



Proposed 10-11

## 4.30% PROJECTED TAX INCREASES

<u>Assessed Valuation</u>	<u>Tax Inc. Annual</u>	<u>Tax Increase Monthly</u>
200,000	\$123.47	\$10.29
300,000	\$185.20	\$15.43
411,331	\$253.93	\$21.16
500,000	\$308.66	\$25.72
600,000	\$370.40	\$30.87
700,000	\$432.13	\$36.01



Fax  
Email  
Call  
Voice  
Update

# Information overload

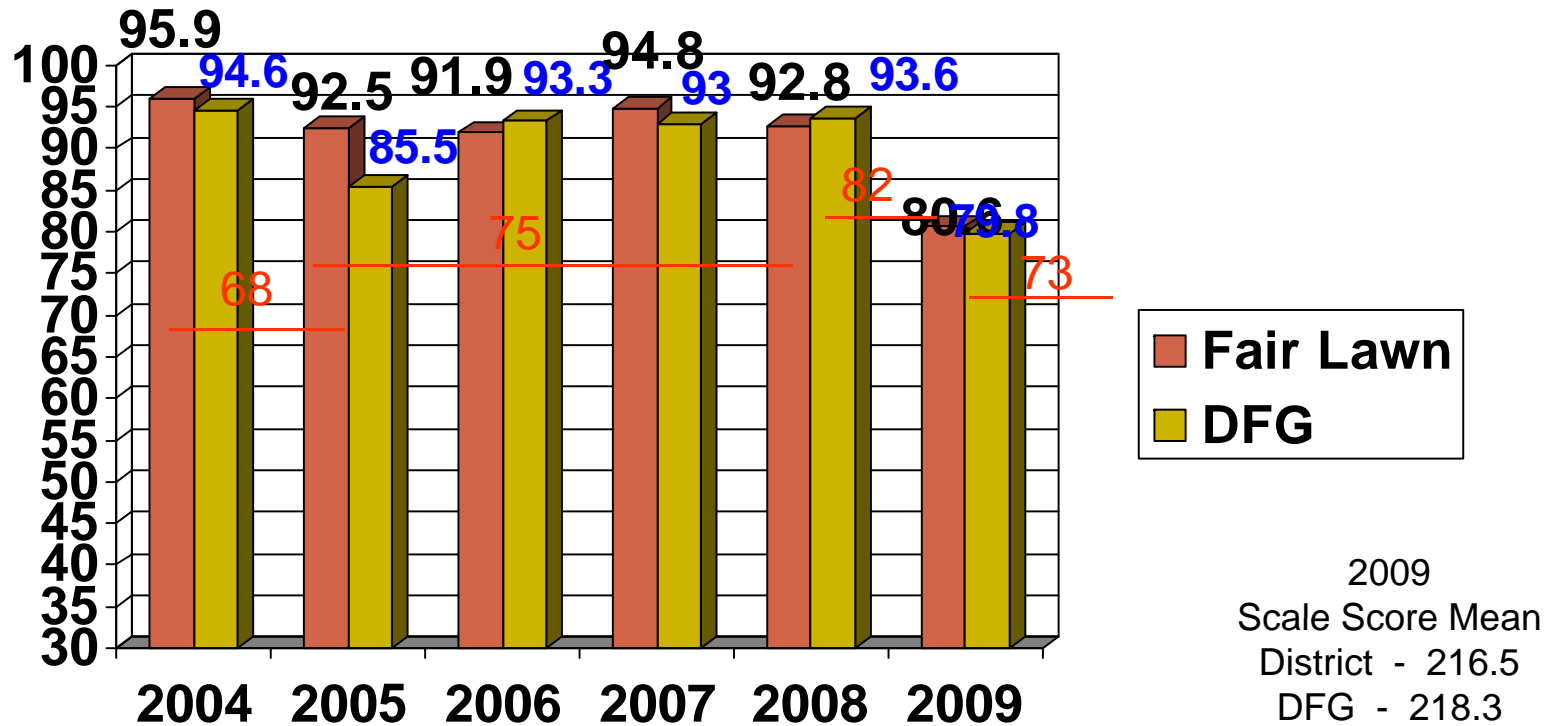
# District Factor Groups



- The District Factor Group (DFG) is an indicator of the socioeconomic status of citizens in each district and has been useful for the comparative reporting of test results from New Jersey's statewide testing programs.
- They range from A (lowest socioeconomic districts) to J (highest socioeconomic districts) and are labeled as follows: A, B, CD, DE, FG, GH, I, J.

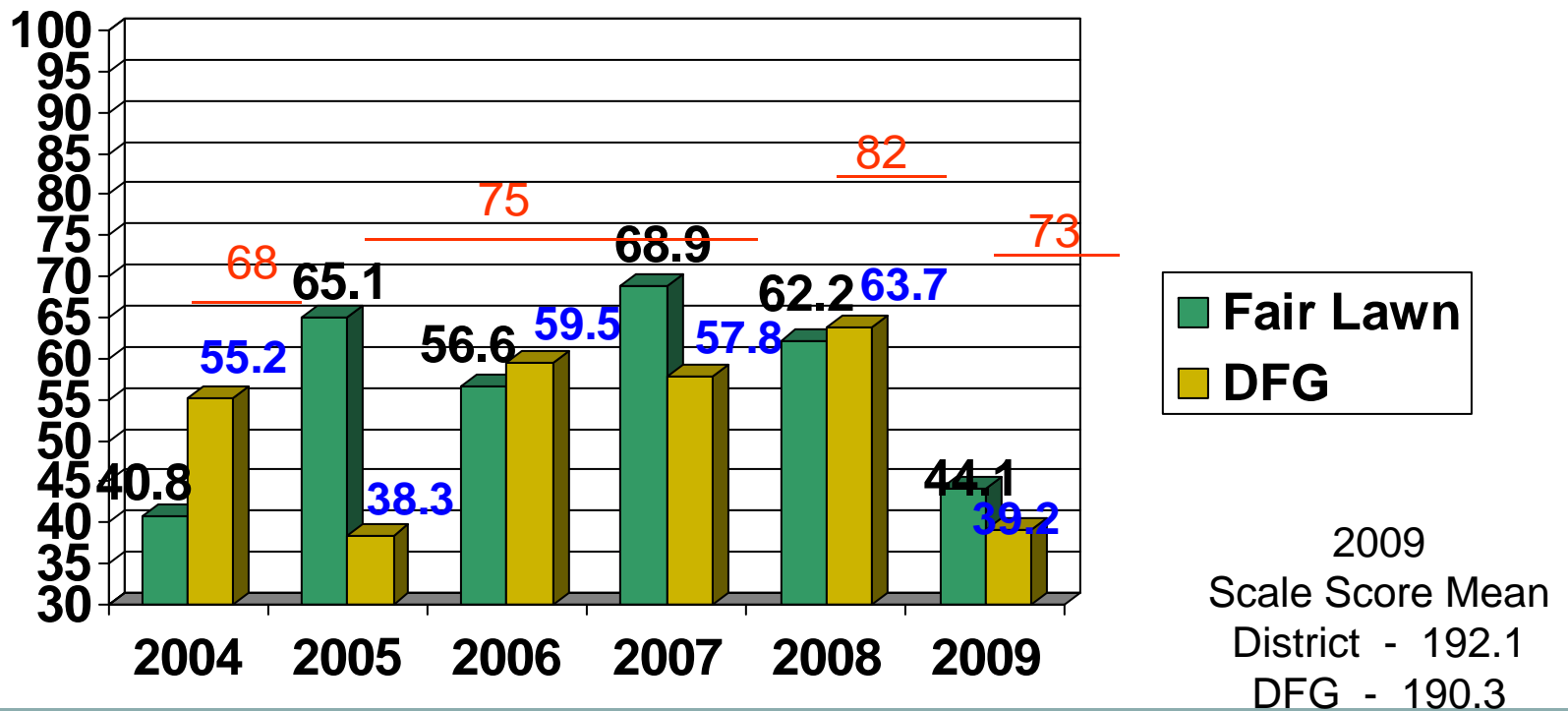
# District Grade 4 NJASK Total NCLB Proficiency Scores General Students versus DFG 2004 - 2009

## Language Arts



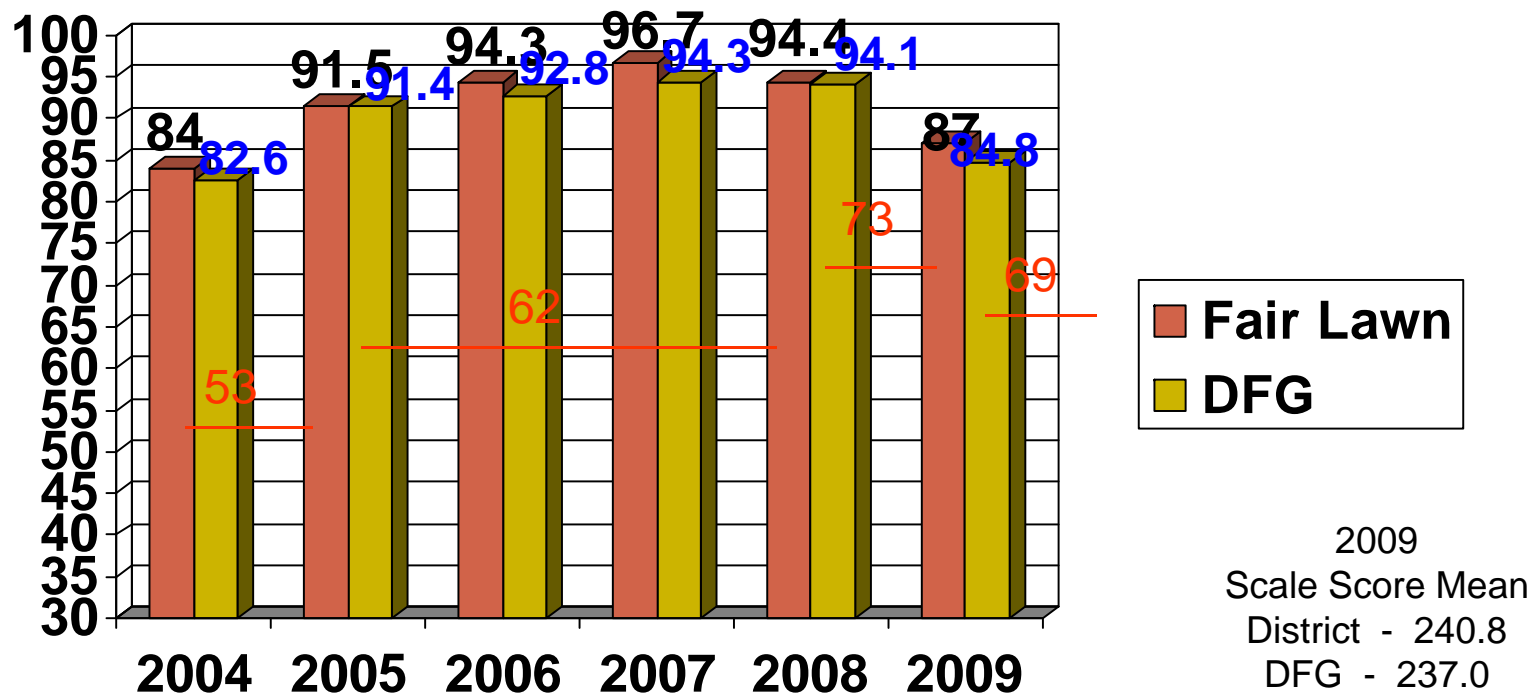
# District Grade 4 NJASK Total NCLB Proficiency Scores Special Education Students versus DFG 2004 - 2009

## Language Arts



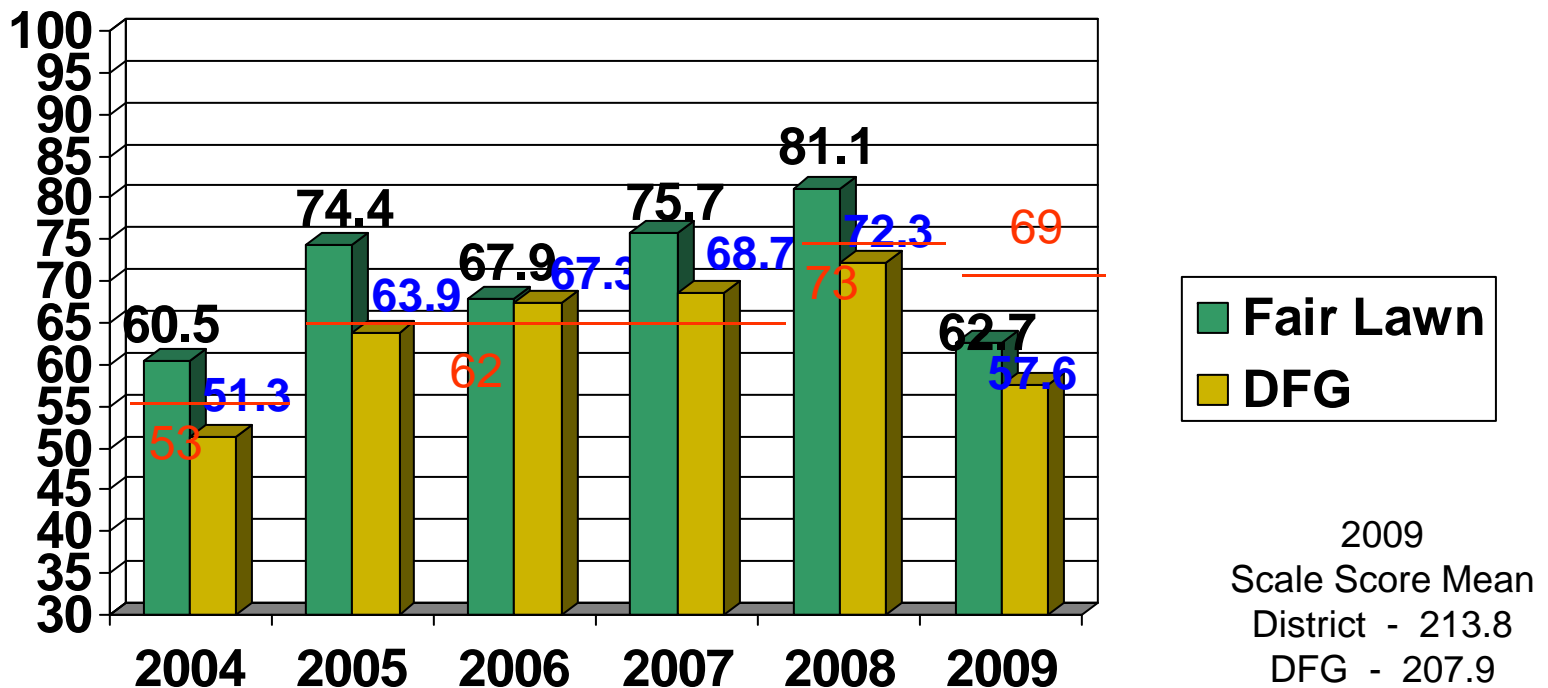
# District Grade 4 NJASK Total NCLB Proficiency Scores General Students versus DFG 2004 - 2009

## Mathematics



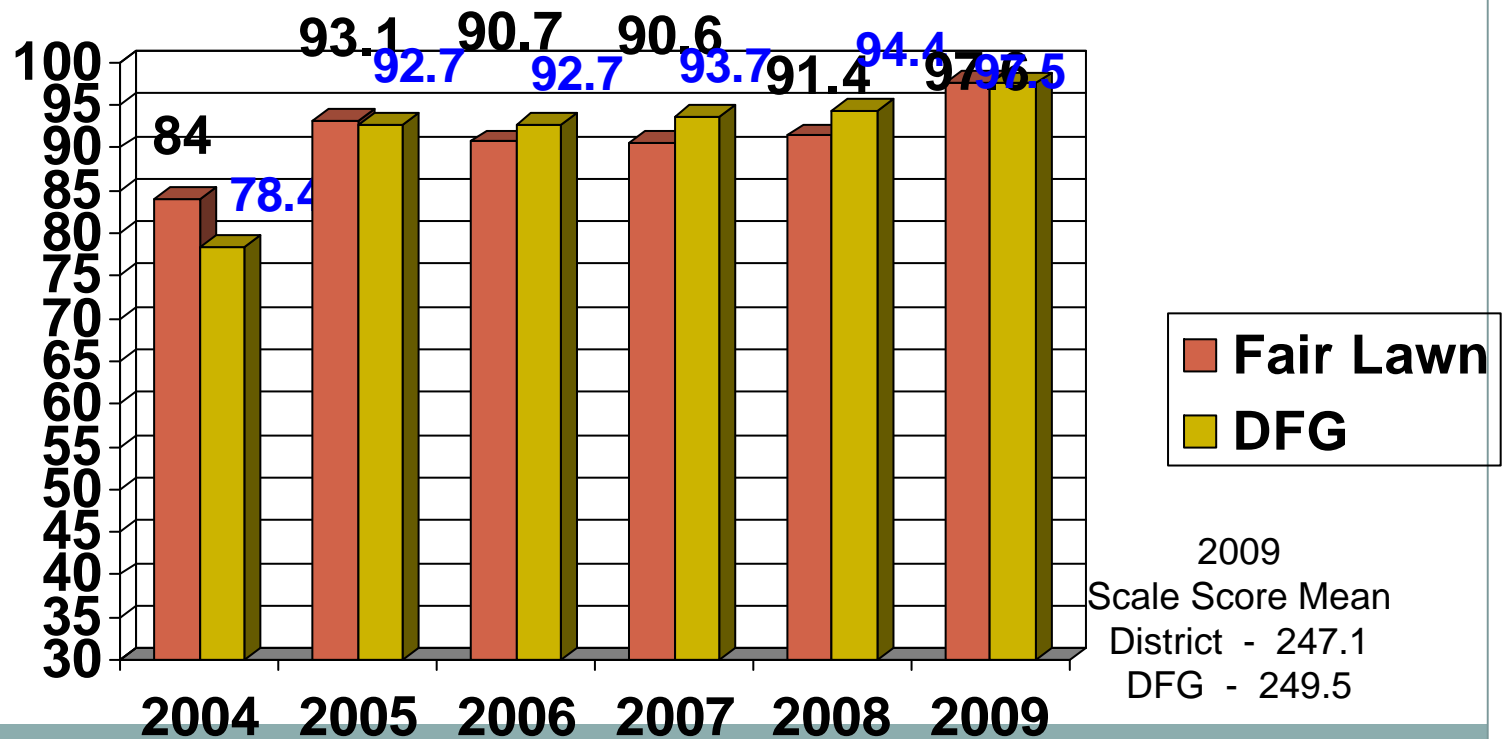
# District Grade 4 NJASK Total NCLB Proficiency Scores Special Education Students versus DFG 2004 - 2009

## Mathematics



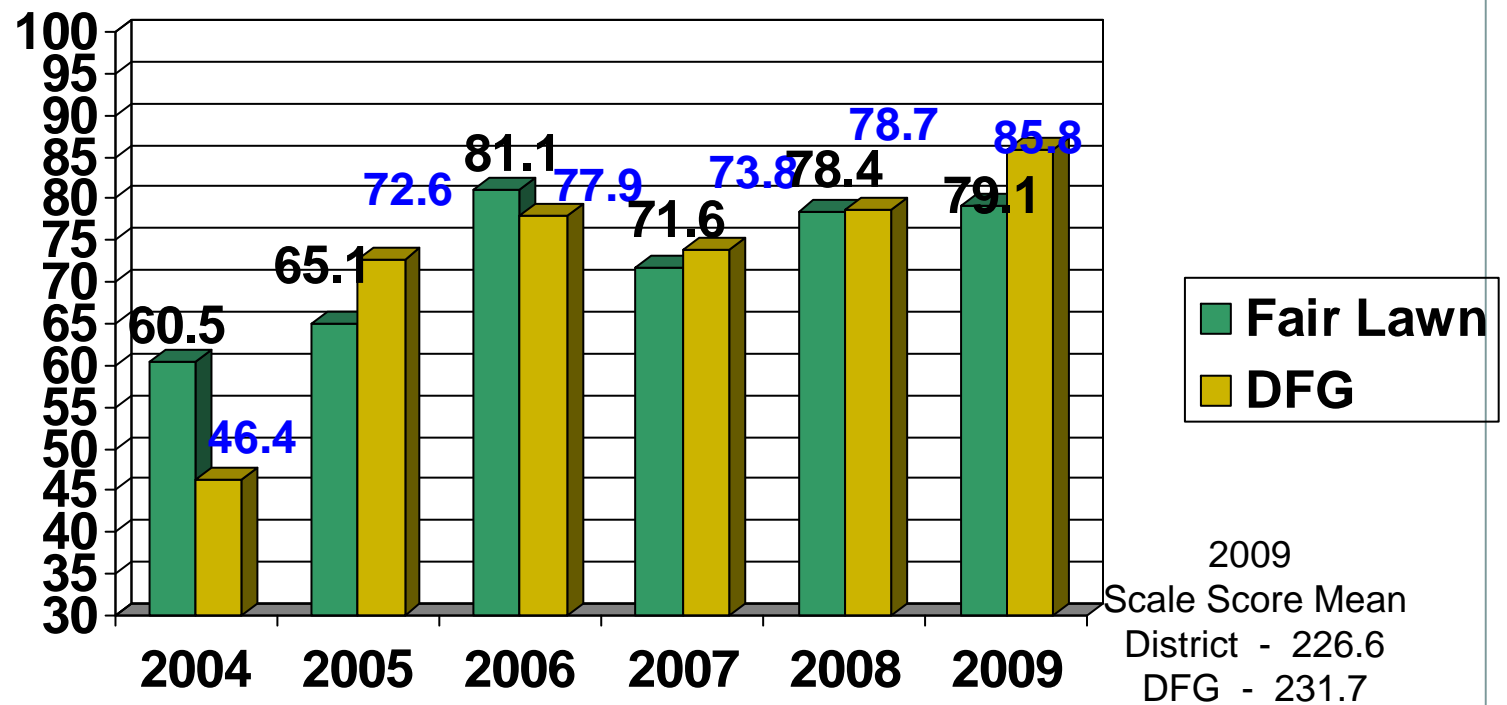
# District Grade 4 NJASK Total NCLB Proficiency Scores General Students versus DFG 2004 - 2009

## Science



# District Grade 4 NJASK Total NCLB Proficiency Scores Special Education Students versus DFG 2004 - 2009

## Science



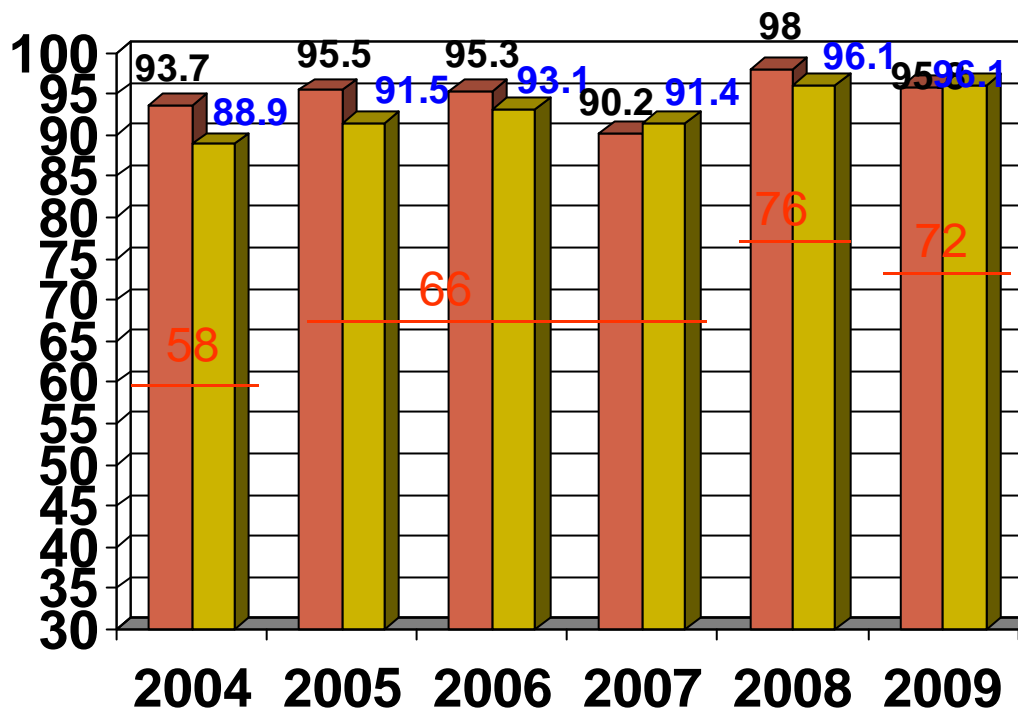
# District Grade 8 GEPA/NJASK

## Total NCLB Proficiency Scores

### General Students versus DFG

2004 - 2009

### Language Arts



2009  
Scale Score Mean  
District - 229.5  
DFG - 231.4

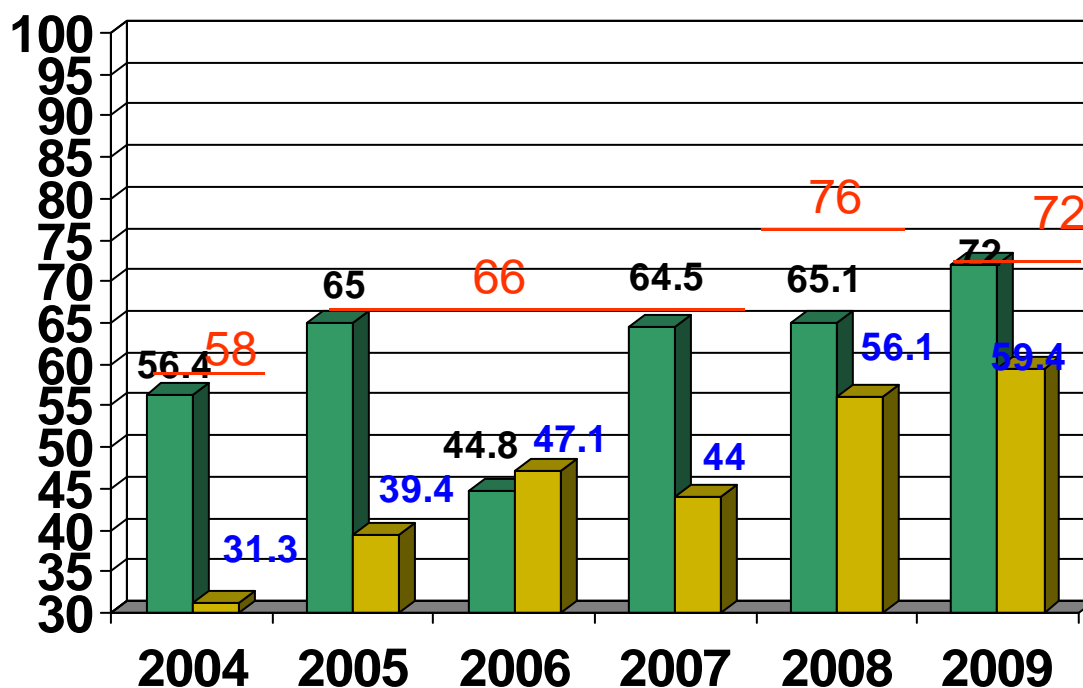
# District Grade 8 GEPA/NJASK

## Total NCLB Proficiency Scores

### Special Education Students versus DFG

2004 - 2009

#### Language Arts



2009  
Scale Score Mean  
District - 209.5  
DFG - 203.5

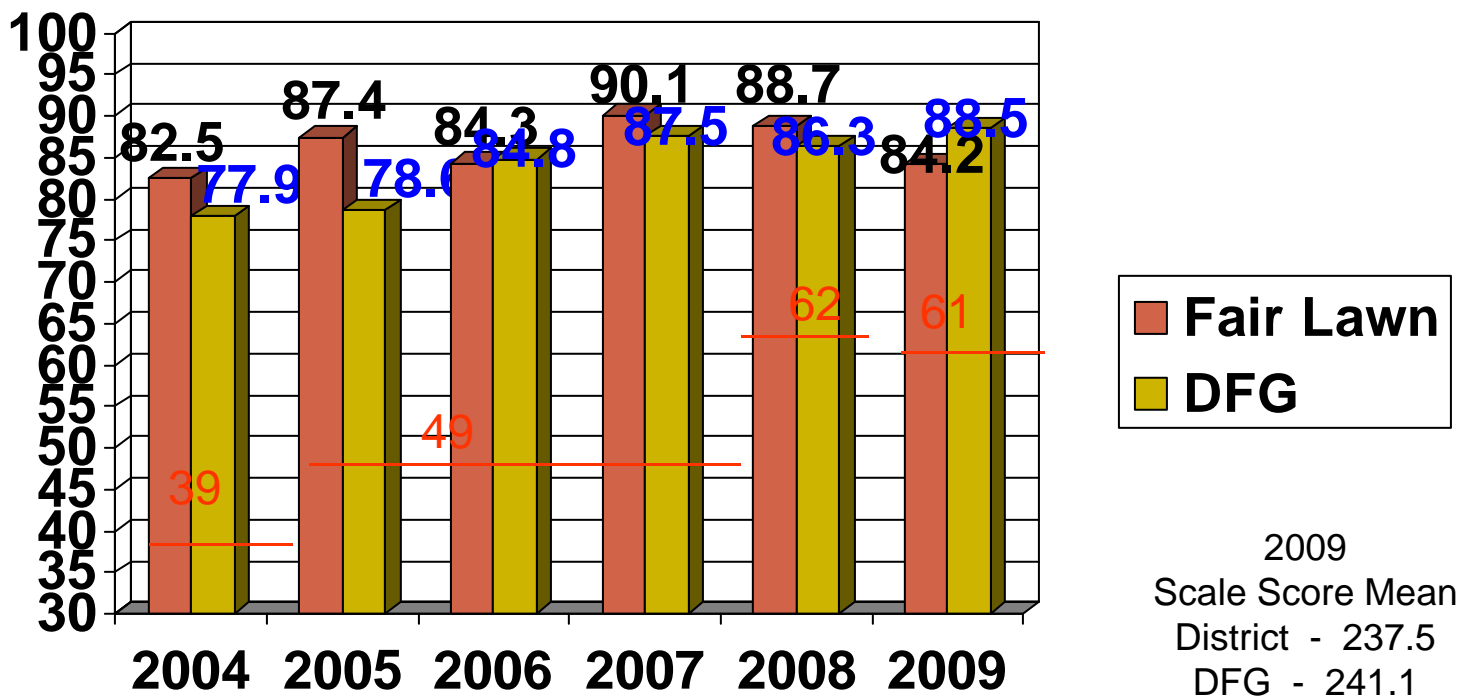
# District Grade 8 NJASK

## Total NCLB Proficiency Scores

### General Students versus DFG

2006 - 2009

### Mathematics



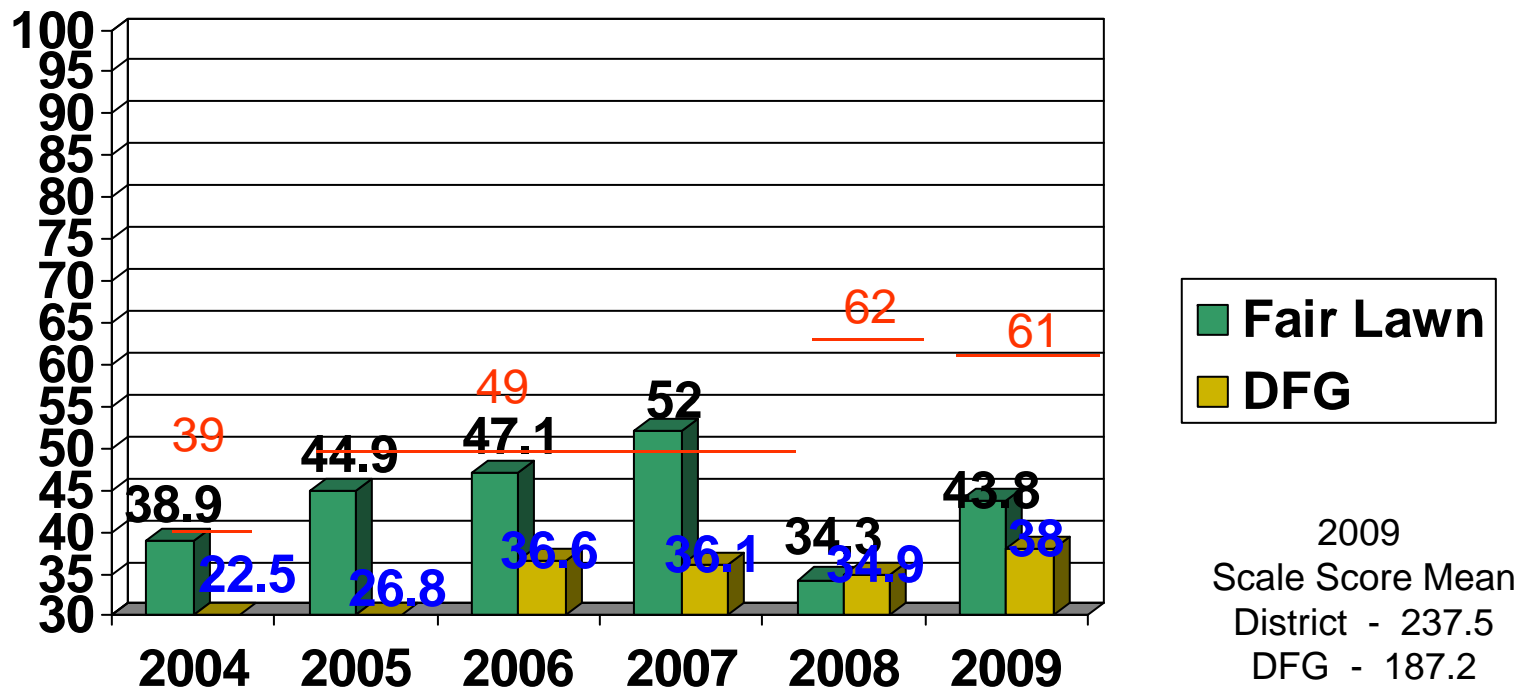
# District Grade 8 NJASK

## Total NCLB Proficiency Scores

### Special Education Students versus DFG

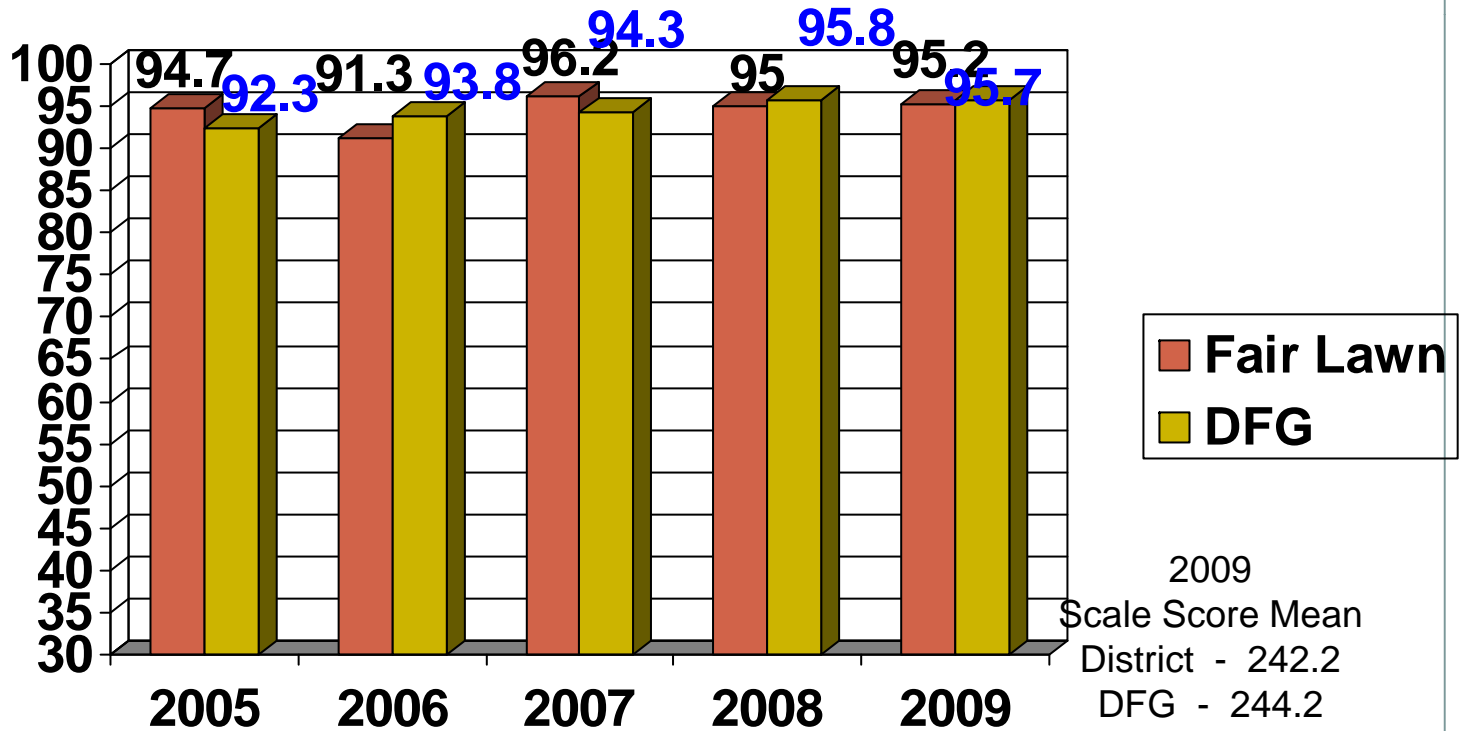
2006 - 2009

### Mathematics



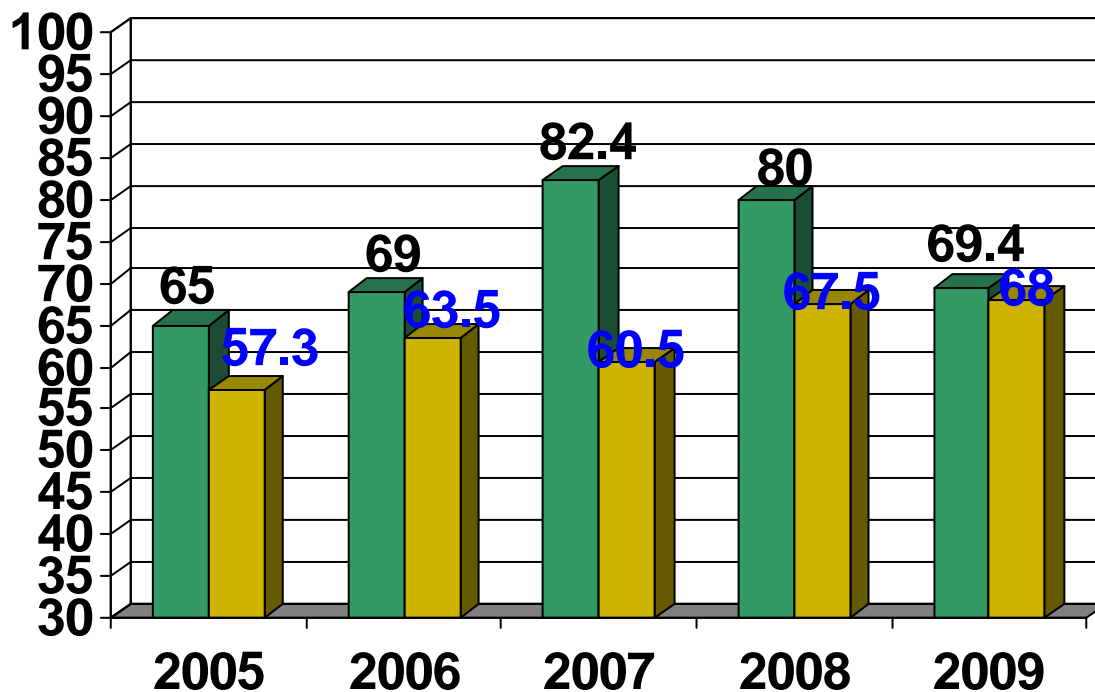
# District Grade 8 NJASK Total NCLB Proficiency Scores General Students versus DFG 2005- 2009

## Science



# District Grade 8 NJASK Total NCLB Proficiency Scores Special Education Students versus DFG 2005 - 2009

## Science



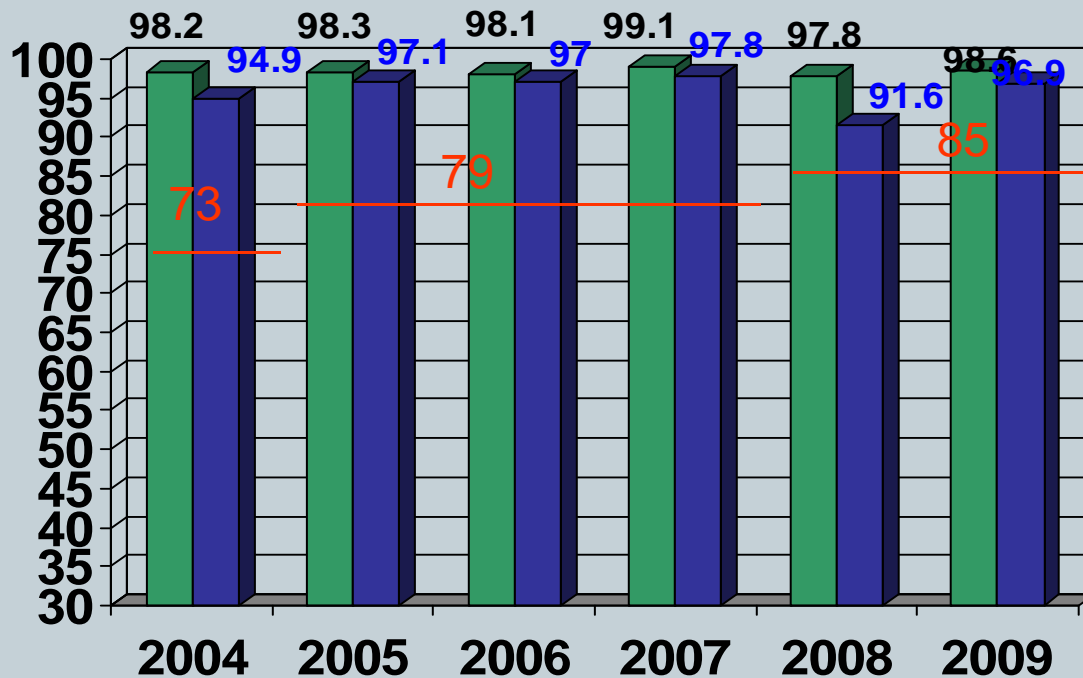
2009  
Scale Score Mean  
District - 220.3  
DFG - 213.1

# District Grade 11 HSPA Total NCLB Proficiency Scores

General Education Students versus DFG

2004 - 2009

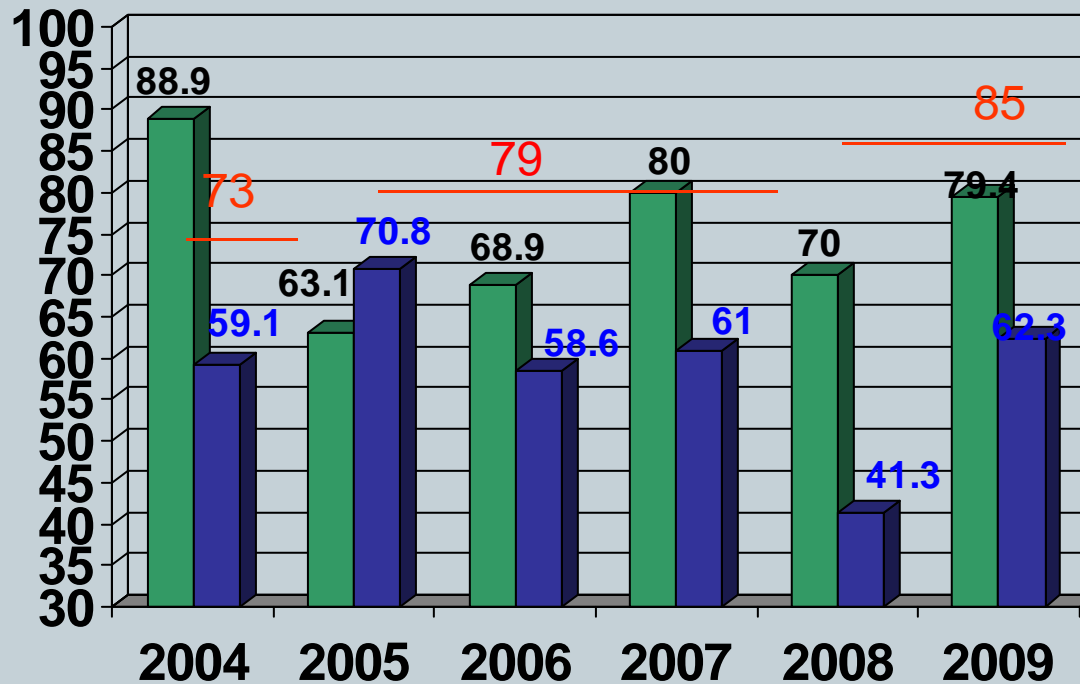
## Language Arts



2009 Scale Score Mean  
District - 238.7  
DFG - 235.3

# District Grade 11 HSPA Total NCLB Proficiency Scores Special Education Students versus DFG 2004 - 2009

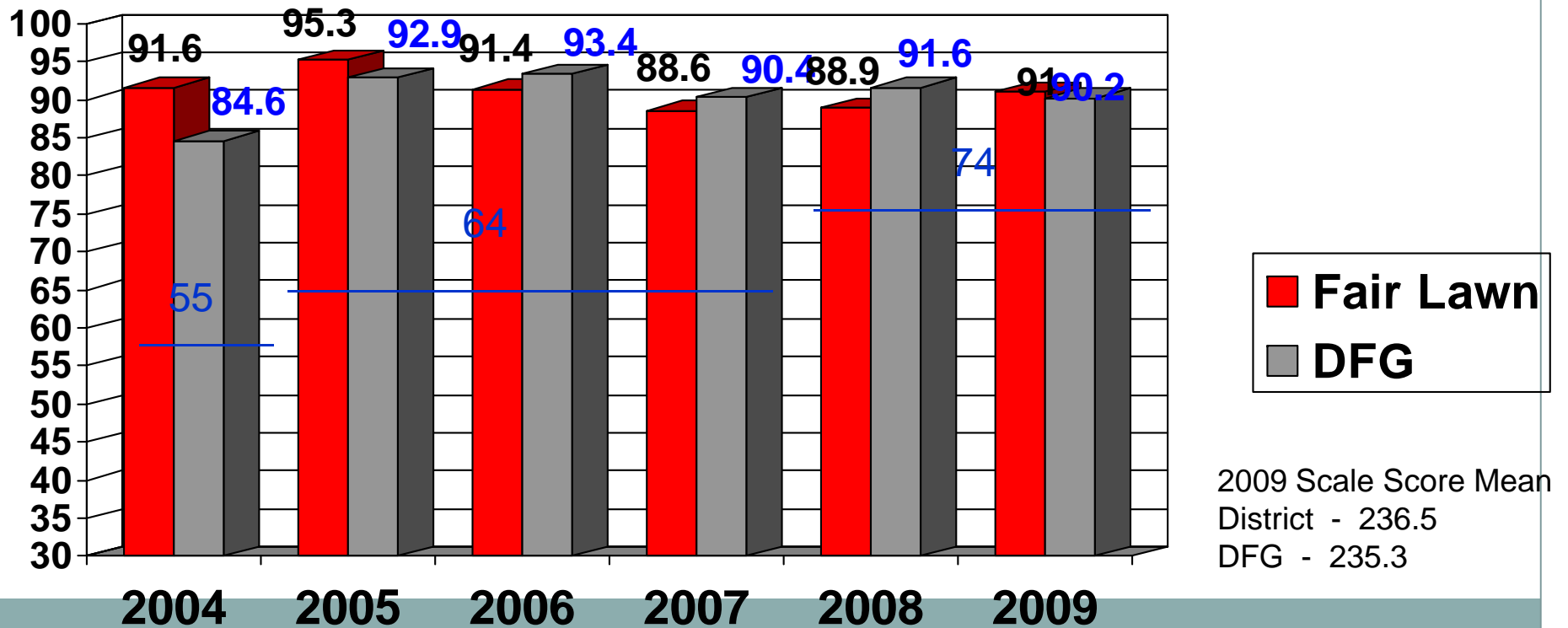
## Language Arts



2009 Scale Score Mean  
District - 209.4  
DFG - 202.2

# District Grade 11 HSPA Total NCLB Proficiency Scores General Education Students versus DFG 2004 - 2009

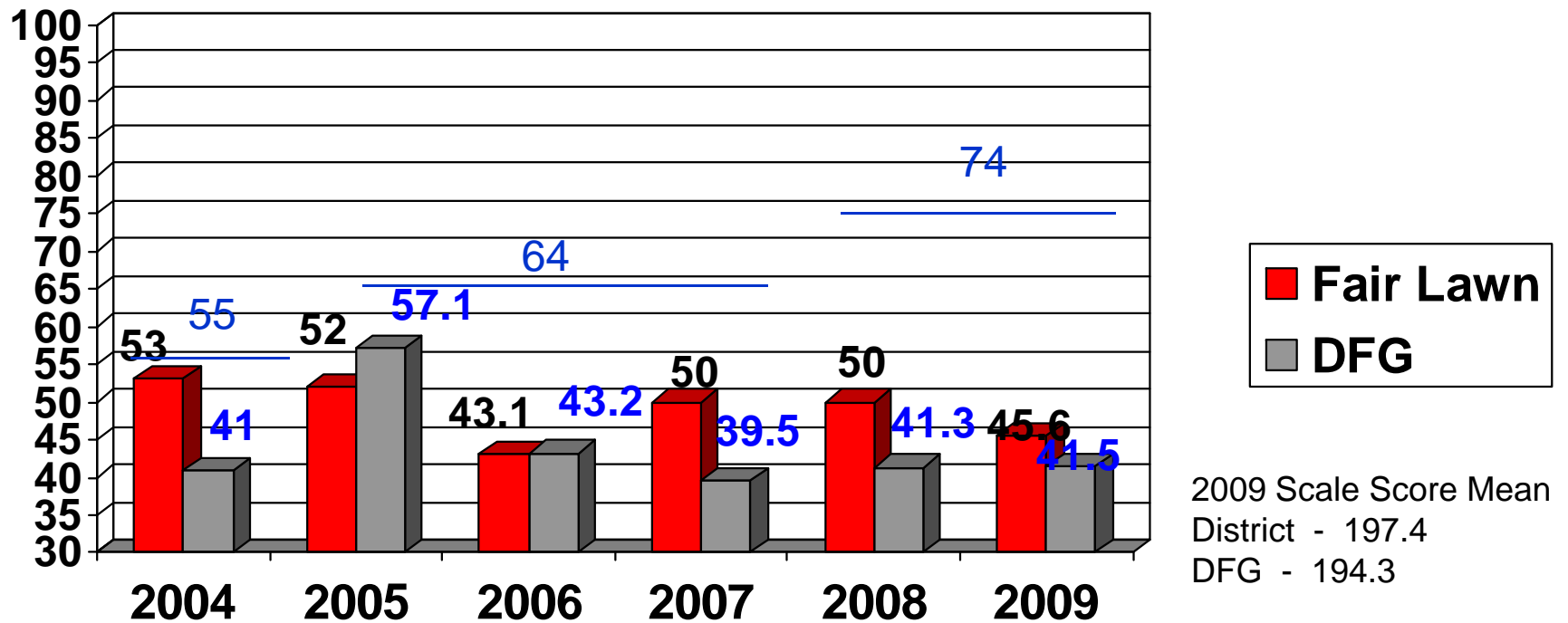
## Mathematics



# District Grade 11 HSPA Total NCLB Proficiency Scores

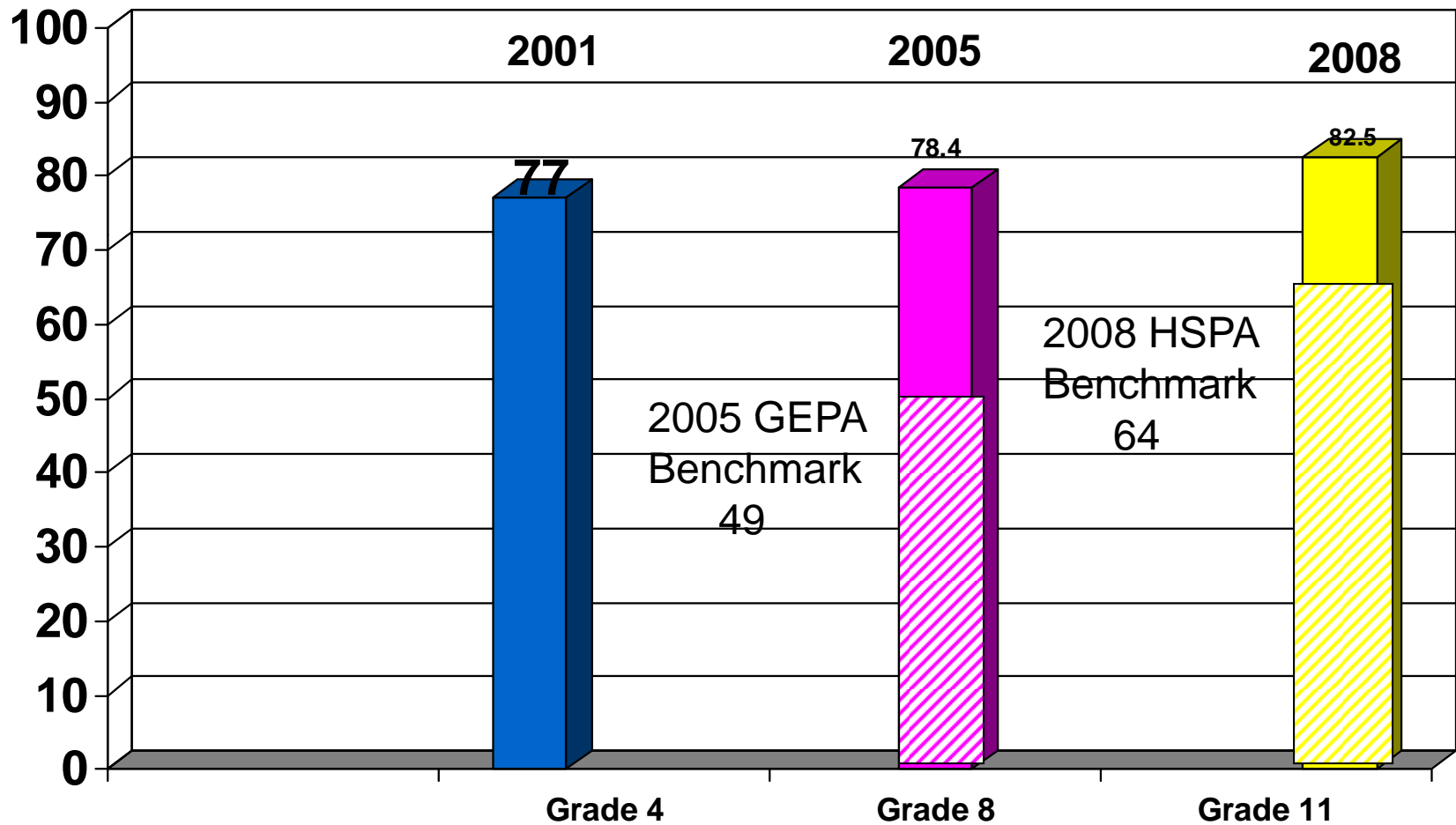
## Special Education Students versus DFG 2004 - 2009

### Mathematics

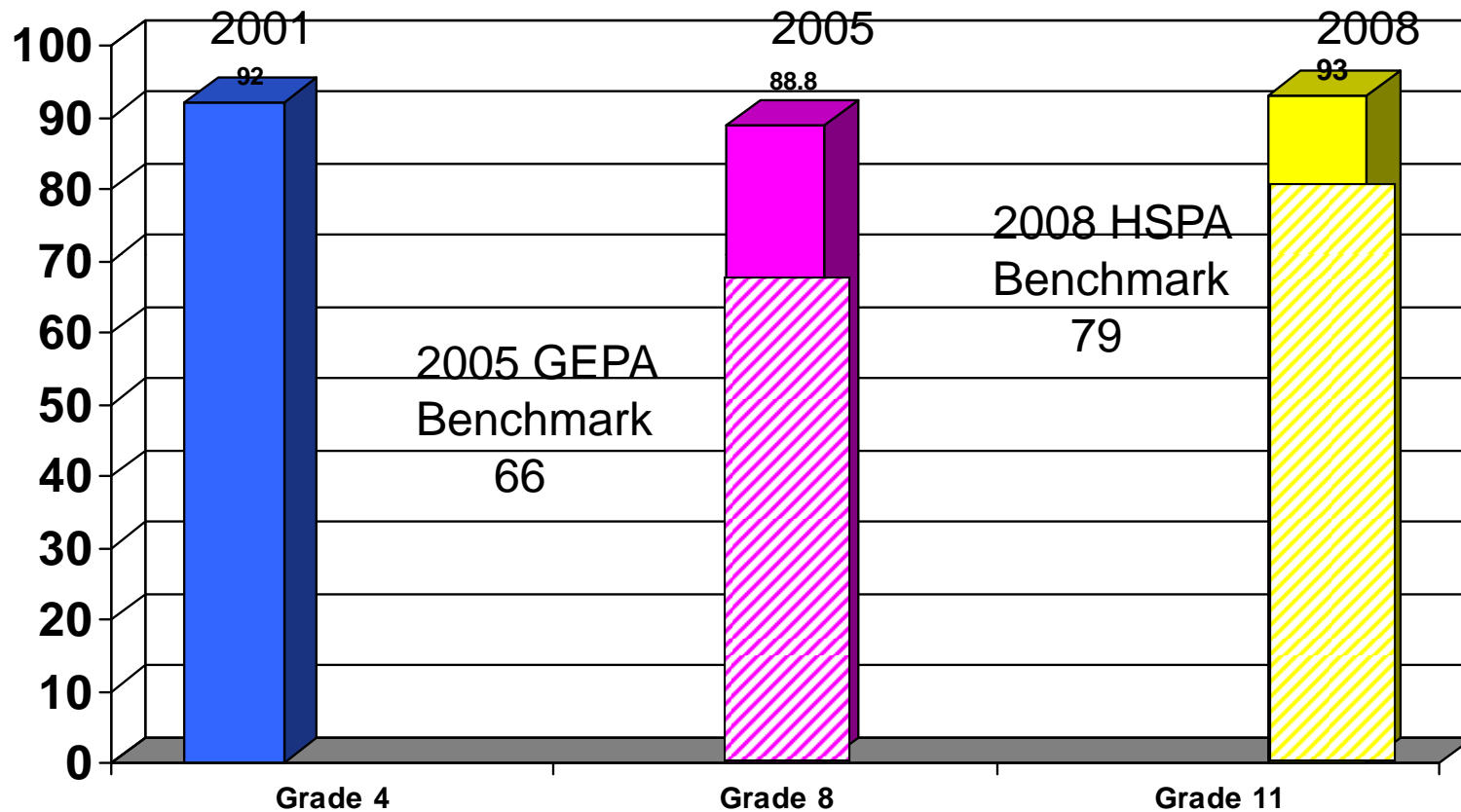


# State Test Scores in Mathematics

## Total Number Tested



# State Test Scores in Literacy Total Number Tested



# Reductions in Personnel-Instruction



- Reductions in the following district position categories are being considered due to changes in enrollment, retirement, non-renewals, loss of funding or reallocation of staffing resources, tenure and contract law: (19 full time and 10 part time positions)
  - High School: Teachers, Guidance, Facilitator Stipends
  - Middle Schools: Teachers, Guidance, Librarians
  - Elementary Schools: Teachers, Ancillaries, Librarians, Specialists
  - Administration: Administrator and Professional Services

# Reductions in Personnel-Support



- Custodial—building custodians, grounds, maintenance, bus drivers  
(8 full time positions)
- Secretarial—secretaries, clerk aides
  - (6 full time positions and 11 part time positions)
- Aides/Other—copy clerk, media aides, locker room aide, lunchroom aides, greeters, nurse aide, para-professionals
  - (29 part time positions)

# Programs Affected



- **Athletics and Extra Curricular**
  - Two teams—Golf and Gymnastics
  - Various coaches
  - Chaperone pay
  - Transportation—practice sites, band competition
  - Middle School Clubs (to be determined) and late busses
  - Music Instruments (rented and maintained)

# Programs Affected



- **World Language**
  - Offered in elementary school in grades 3-5
- **Bridging the Gap**
  - Replaced by a 9<sup>th</sup> grade transition program at the HS
- **Making the Connection**
  - Intervention program at the 5<sup>th</sup> and 6<sup>th</sup> grade will work with St. Barnabas grant program

# Programs Affected



- **REACH Program**
  - Change in the ID process
- **Technology**
  - Major reduction in budget funds will result in a maintenance only situation
- **Field Trips**
  - Very few—Buehler and HS Planetarium

# Programs Affected



- **Special Education**
  - **Extended School Year Summer Program will be shortened**
- **Intervention/Remediation**
  - **Changes at all levels**
- **Change in the delivery of library services where personnel is affected**
- **Professional Development-opportunities reduced**

# Changes to the BSI Program



- **Change to MS rotations will provide additional time for literacy and mathematics**
- **Modify the high school program to provide an English Lab and Math Lab**
- **Positions cut due to loss of ARRA Funds**

# DISTRICT INITIATIVES - TECHNOLOGY



- Continue the support for Edline online communication tool
- Continue support for the new elementary report card and electronic grade book at the Middle and High Schools
- Monitor the standards-based technology assessment in grades 4 and 8
- Implement and support student management system (Genesis)
- Monitor the Wiki for new teachers as a tool for learning, communication, and collegial support
- Continue to implement and support contour web tracker
- Continue to support use of Google and Smart Tech. Tools/Applications

## DISTRICT INITIATIVES CONTINUED-TECHNOLOGY AND PROFESSIONAL DEVELOPMENT



- Monitor the new MAC Lab
- Continue to explore software through our elementary teacher software fair
- Research and implement an online program for housing the district curricula
- Support the concept of professional learning communities by providing staff development for school and district teams
- Continue to support new Teacher Academy
- Continue to build Pathways Model for the HS

# DISTRICT INITIATIVES-LITERACY



- Monitor and evaluate the Mondo reading program K-5
- Examine and evaluate the common benchmark assessments in the Mondo program
- Explore the Mondo Phonics program for K,1, 2
- Analyze and evaluate the reading/writing assessments in the district literacy portfolios
- Continue to facilitate the intervention programs, 1-8

# DISTRICT INITIATIVES-LITERACY



- Monitor and support the remediation labs at the HS
- Design and implement additional English 12 semester courses
- Implement a new literacy block at the middle schools
- Revise the literacy roadmaps, K-3 and design roadmaps for grades 4-5
- Explore Learnia as a remediation tool

# DISTRICT INITIATIVES - MATHEMATICS



- Implement Quizdom - HS student response system
- Continue support for Everyday Math K-5
- Maintain the implementation of TInspire – new software for the graphing calculator
- Continue and evaluate Study Island as a remediation tool
- Explore Learnia as a remediation tool
- Maintain support of the remediation labs at the HS
- Examine Pre-Algebra and Algebra I curriculum in preparation for new Algebra I end course examination

# DISTRICT INITIATIVES CONTINUED- MATHEMATICS



- **Implement a new math/lab rotation at the MS**
- **Evaluate the multivariable course at the HS**
- **Continue to support skill based instruction for the student who needs remediation**
- **Continue to provide and support various mathematics software – animation factory, visual calculus and fathom statistics**

# DISTRICT INITIATIVES -PHYSICAL EDUCATION



- **Implement the new NJ CCCS**
- **Continue to revamp and improve Project Adventure course at the HS**
- **Provide additional training for all K-12 teachers on the Project Adventure elements**
- **Support the Physical Education / Health consultant for K-8**
- **Evaluate the new fitness curricula at the HS**

# DISTRICT INITIATIVES -SOCIAL STUDIES



- **Implement the new NJ CCCS**
- **Monitor the curriculum changes in grades 2-8**
- **Monitor the new semester courses at the HS –Latino Studies, Contemporary World Issues/ Global Studies & Economics**
- **Evaluate the curricular changes to the integrated enriched courses at the middle school**
- **Continue to build an appropriate primary documents library for grades 1-12**
- **Complete the purchase of maps for the elementary level**

# DISTRICT INITIATIVES -WORLD LANGUAGE-ESL



- **Implement the new NJ CCCS**
- **Restructure World Language at the elementary level**
- **Provide for a different selection process at the middle level**
- **Offer Chinese level 3 at the HS**
- **Develop the Spanish 3 Plus at the HS for special education students**
- **Continue the summer remediation program for ESL students**
- **Monitor the implementation of the IPOD initiative in ESL**
- **Expand the IPOD program in the ESL/World Language Department**
- **Monitor the transition courses, Social Studies, Science at the HS**

## DISTRICT INITIATIVES -SCIENCE



- Implement the new NJ CCCS
- Continued support for elementary program grades 1-5 and research a kindergarten program
- Evaluate new curriculum for middle schools 8<sup>th</sup> grade physics and extend to additional levels
- Continue to explore a new HS sequence with Physics in 9<sup>th</sup> grade as an option and AP Physics C as an elective for Seniors
- Provide for the retooling of a science teacher to certify for Physics First

## DISTRICT INITIATIVES CONTINUED-SCIENCE



- **Maintain and revitalize our affiliation with Fairleigh Dickinson University**
- **Continue to explore and implement Vernier technology into the various Science courses**
- **Continue the support for the Lyncrest Science Initiative**
- **Revise the Biology curriculum to address the Biology End of Course Assessment**
- **Continue and expand the Bergen Community College partnership**

## DISTRICT INITIATIVES -ART, BUSINESS, & CAREER ED.



- **Restructure Business courses to provide for the state mandated Financial Literacy**
- **Design and implement a Business course in partnership with the Business Coalition of NJ/Bergen County**
- **Continue to support the Festival of Arts**

## DISTRICT INITIATIVES -VISUAL & PERFORMING ARTS

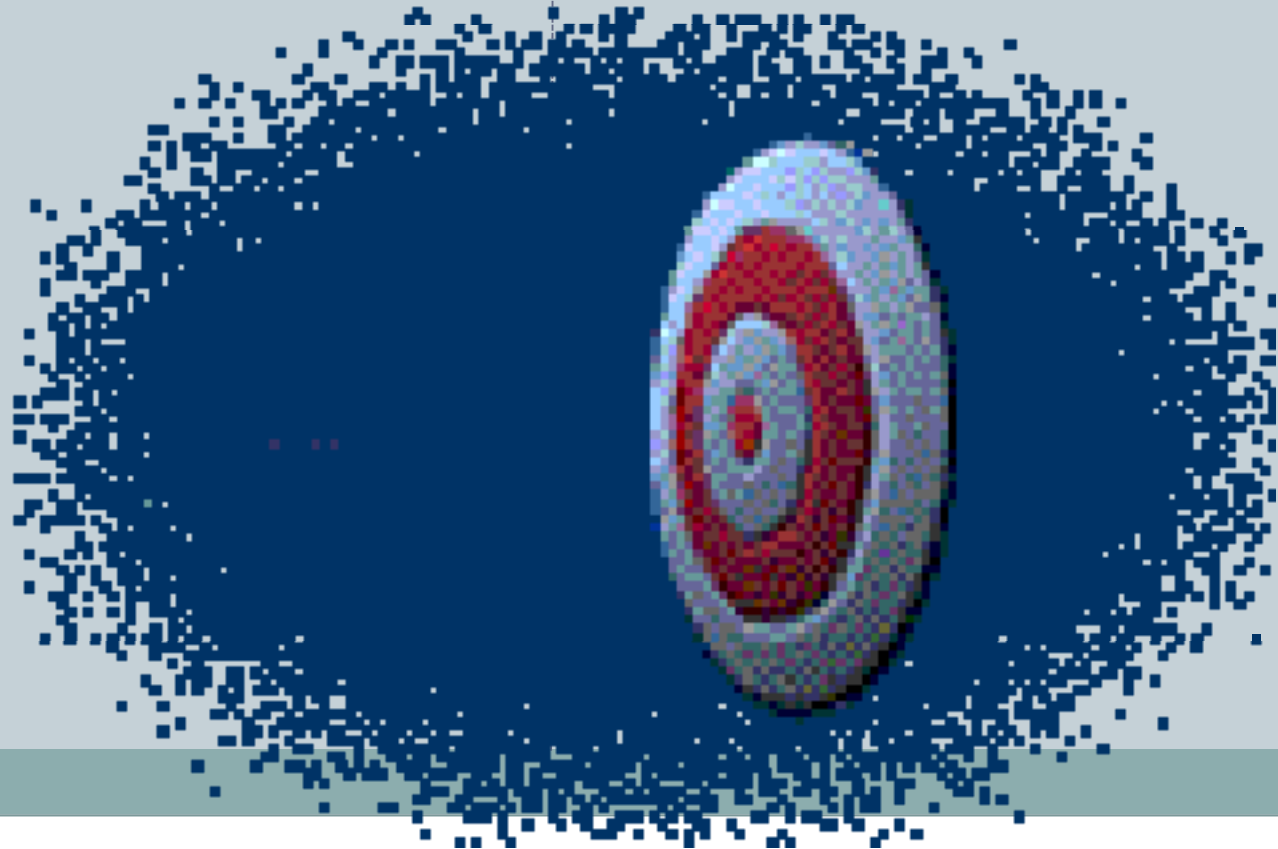


- **Implement new NJ CCCS**
- **Monitor and evaluate the MAC Lab**
- **Revamp the providing of instruments and repair program**
- **Continue to support K-12 program in Art and Music**

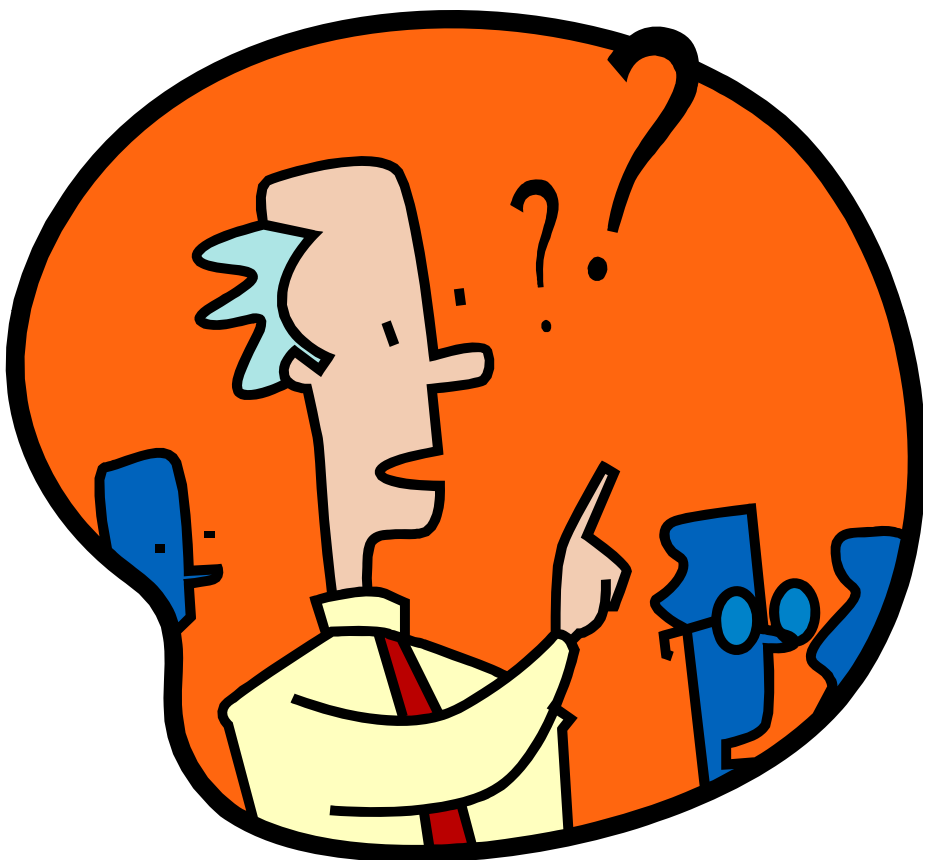
*Remember to*

*vote!*

**April 20, 2010**



W Z O = H O O Q



W Z O = H O O Q